

ADDENDUM No. 1 – (January 8, 2019)

ADDENDUM TO: Expansion Joint Repair, RJS
BID NUMBER: 18-06
BID DUE DATE: Thursday, January 10, 2019 not later than 10:00am

TO BIDDER: This addendum is an integral part of the Bid file under consideration by you as a bidder in connection with the subject matter identified above. For the purpose of clarification the following additions, changes, modifications and replacements noted below have been made to the Bid and have been made to the Bid file which bears the above title.

Bids submitted shall conform to these additions and modifications noted herein and including all issued addendums.

See attachment

Note: To qualify your proposal, of which this addendum becomes a part, this form must be completed and returned to this office with the proposal.

Date: _____

Authorized Signature of Company Rep.

Printed Name of Company Rep.

Company: _____

Address: _____

Telephone: _____

Contact's Email: _____

End of Addendum #1

ADDENDUM ONE to Bid #18-06

Expansion Joint Repair Raymond James Stadium

The following information shall be incorporated into the Bid Documents:

1. The Bid Form has been amended and is a part of this Addendum One.
2. Provide an Add Alternate#4 to provide the labor and material to remove and reinstall the fixed seats in the bowl in the areas where expansion joint work is to occur. This add Alternate shall be divided into two costs, one for acceptance of Alternate#1 and one without acceptance of Alternate#1.
3. The construction schedule provided in section 01311 of the specifications includes acceptance of Alternate#1.
4. Detail 2, attached to this Addendum, shall become a part of the bid documents.
5. Provide an Add Alternate#5 to provide a unit price for hourly labor to provide owner directed repairs to concrete to surface concrete in bowl as may be needed for work unrelated to the expansion joint repair. Material will be provided by Owner.

END OF ADDENDUM

BID FORM

Project: RAYMOND JAMES STADIUM
Expansion Joint Repair
Bid #18-06
TAMPA SPORTS AUTHORITY

The undersigned has attended the mandatory pre bid meeting, examined all Contract Documents, and the site for the above project and agrees to furnish and pay for all labor, materials, equipment, plant, appurtenances, services, taxes unless declared exempt by the Contract Documents and utilities required to complete this project according to all the requirements of the Contract Documents, including all addenda, at and for the price(s) stated below regardless of any increase in wages or material prices.

The Contractor in submitting this bid guarantees the following price for forty-five (45) days:

NAME OF BIDDER _____	
PROJECT BID #18-06	
BASE BID TOTAL	
_____ Dollars	\$ _____
Total Price in words	Price in Figures
ADD ALTERNATE#1 : (Expansion joints on Upper Bowl, Sheet A.1-9)	
ADD:	
_____ Dollars	\$ _____
Total Price in words	Price in Figures
ADD ALTERNATE#2: (Expansion joints at end zone concourse, Sheet A.1-2)	
ADD:	
_____ Dollars	\$ _____
Total Price in words	Price in Figures
ADD ALTERNATE#3: (Remove and replace decking planks at Pirate ship)	
ADD:	
_____ Dollars	\$ _____
Total Price in words	Price in Figures

ADD ALTERNATE#4: (Remove and replace fixed seating)

a. WITH ACCEPTANCE OF Alternate#1ADD:

_____ Dollars \$ _____
Total Price in words Price in Figures

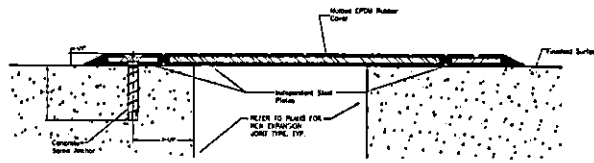
b. WITHOUT ACCEPTANCE OF Alternate#1ADD:

_____ Dollars \$ _____
Total Price in words Price in Figures

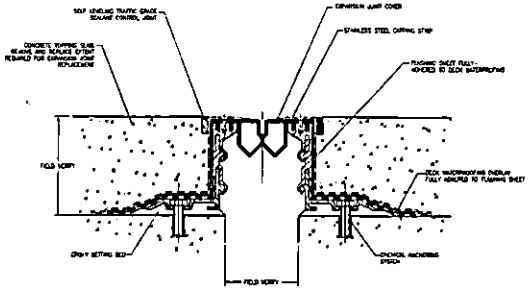
ADD ALTERNATE#5 : (Price for labor Owner directed repairs for 200 hours)

ADD:

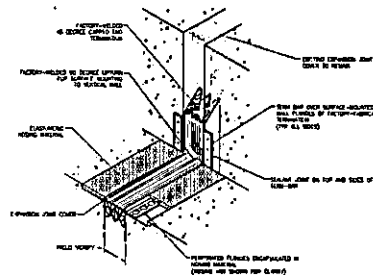
_____ Dollars per hours x 200 hrs \$ _____
Total Price in words Price in Figures



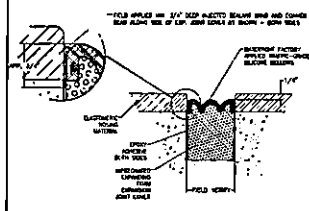
8 ALTERNATE CONCOURSE COVER PLATE
3/4" x 4"



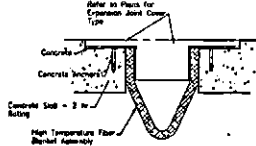
4 CONC. SPLIT SLAB-TO-SLAB E.J. (EJ4)
3/4" x 4"



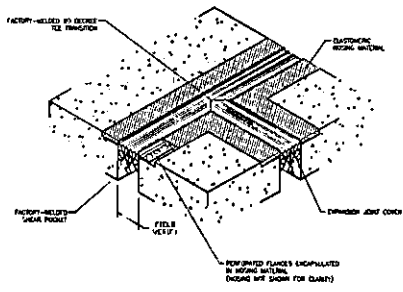
7 EXP. JOINT EJ2 VERT. TRANSITION DETAIL
3/4" x 4"



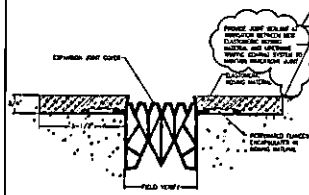
3 SEATING BOWL EXP. JOINT (EJ3)
3/4" x 4"



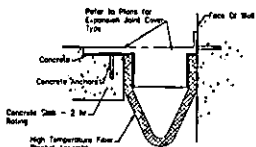
10 SLAB-TO-SLAB FIRE BARRIER DETAIL
3/4" x 4"



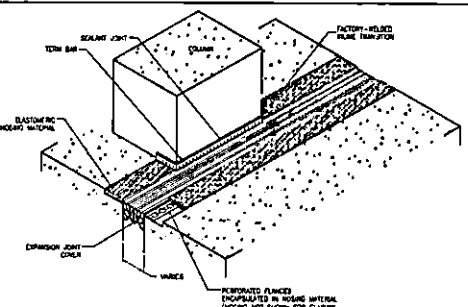
6 EXP. JT. EJ2 90 DEG. TRANSITION DETAIL
3/4" x 4"



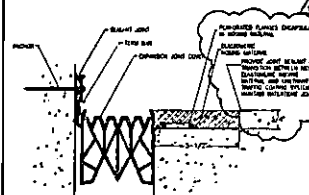
2 STRUCT SLAB-TO-SLAB EXP. JT. (EJ2)
3/4" x 4"



9 SLAB-TO-WALL FIRE BARRIER DETAIL
3/4" x 4"



5 EXP. JT. EJ1 TO EJ2 TRANSITION DETAIL
3/4" x 4"

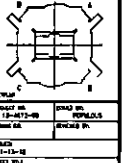


1 STRUCT SLAB-TO-WALL EXP. JT. (EJ1)
3/4" x 4"

POPULOUS
ARCHITECTS

**RAYMOND JAMES
STADIUM**
TAMPA, FLORIDA

NO.	DESCRIPTION	DATE
1	EXPANSION JOINT REPAIR/REPLACE PROJECT	11-13-12
2		
3		
4		
5		
6		
7		
8		
9		
10		
11		
12		
13		
14		
15		
16		
17		
18		
19		
20		



EXPANSION JOINT DETAILS
A.8-2-1